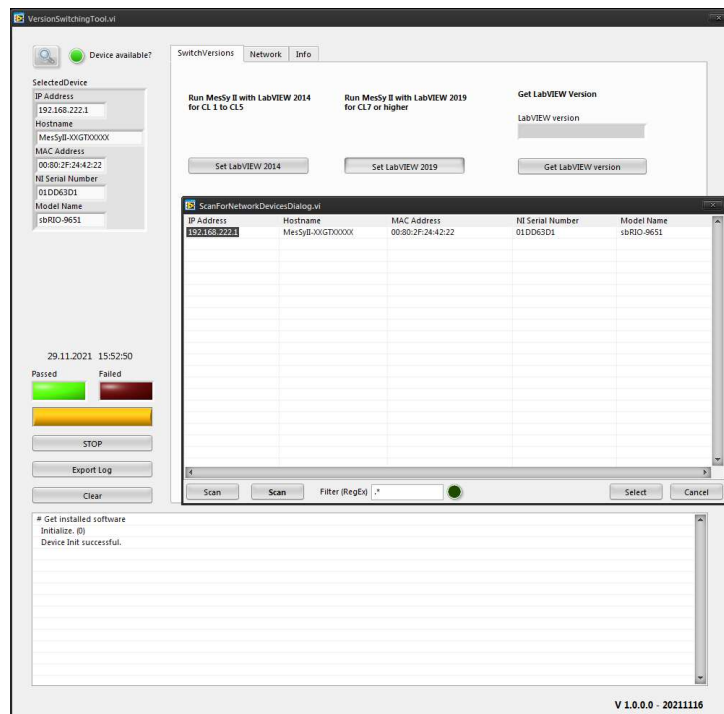




MesSy II Version Switching Tool



IRS Systementwicklung GmbH
Pfaffenthaner Weg 5 | 93179 Brennbereg
+49 9484 9500-0 | info@irs.systems
www.irs.systems

Proprietary data, company confidential. All rights reserved.
Confié à titre de secret d'entreprise. Tous droits réservés.
Comunicado como segredo empresarial. Reservados todos os direitos.
Confiado como secreto industrial. Nos reservamos todos los derechos.

DOCUMENT OVERVIEW

Author: Albert Mühlbauer (albert.muehlbauer@irs.systems)

Date of issue: 29.11.2021

Last saved by: Albert Mühlbauer (02.08.2022)

Filename: IRS VersionSwitchingTool MesSy II.docx

Number of Pages: 11

Revision History

Document version: **1.0**

Version	Date	Author	Description
1.0	29.11.2021	A. Mühlbauer	First Draft

TABLE OF CONTENTS

Document Overview.....	1
Table of Contents	2
List of Tables	3
List of Figures.....	4
1. What is.....	5
1.1 What is ‘MesSy II Version Swichting Tool’?.....	5
1.2 Why ‘MesSy II Version Swichting Tool’?.....	5
1.3 Do I need ‘MesSy II Version Swichting Tool’?.....	5
2. Before you get started.....	5
2.1 General	5
2.2 Network Settings	6
3. Switching versions	7
3.1 Discover MesSy.....	7
3.2 Getting current LabVIEW version	8
3.3 Switching LabVIEW version	9
3.4 Exit VersionSwitchingTool	9
4. Additional functionality	10
4.1 Changing IP address.....	10
4.2 Rebooting MesSy	10

LIST OF TABLES

Es konnten keine Einträge für ein Abbildungsverzeichnis gefunden werden.

LIST OF FIGURES

Figure 1: Firewall prompt	6
Figure 2: Reboot prompt	6
Figure 3: Network Settings	6
Figure 4: Search Button	7
Figure 5: Scan Dialog	7
Figure 6: Device Selection	8
Figure 7: Get Version	8
Figure 8: Start version switching	9
Figure 9: Log Box	9
Figure 10: Execution result	9
Figure 11: Setting IP address	10
Figure 12: Rebooting MesSy	10

1. What is

1.1 What is 'MesSy II Version Swichting Tool'?

'MesSy II Version Switching Tool' is a piece of software that automatically changes MesSy_II's software stack.

1.2 Why 'MesSy II Version Swichting Tool'?

Newer 'iRS LT T GUI' versions prefer LabVIEW 2019 code modules. This made it necessary to migrate the MesSy II code to LabVIEW 2019. Therefore MesSy II software is in LabVIEW 2019 from compatibility level 7 up. As a result, MesSy's firmware must be adapted, when working with compatibility level 7 or higher.

1.3 Do I need 'MesSy II Version Swichting Tool'?

That depends. In case you are working with 'MesSy I' or 'MesSy II FD' you do **not** need this tool.

In case you are using MesSy II with compatibility level < 7 and want to switch to a compatibility level > 7, you want to check this out. Also, if you are already working with compatibility version > 7 and want to switch to an older MesSy software (compatibility level < 7) you need this tool too.

2. Before you get started

2.1 General

You get 'MesSy II VersionSwitchingTool' directly from IRS as software download. Please contact Albert Mühlbauer, Manfred Ludwig or Michael Rost, when you require 'MesSy II VersionSwichtingTool'.

Before you get started, unzip the downloaded package, and copy it to a folder you are authorized to start executables from, for example 'C:\Temp\VersionSwitchingTool'.

Finally, double click on 'MesSy_II_LvVersionSwitchingTool.exe' to start the application.

Be aware, that Windows firewall will prompt you, whether you want to proceed working with this software.

Please confirm and authorize access, otherwise 'VersionSwichtingTool' will not work properly.



Figure 1: Firewall prompt

Once the program has started, follow the instructions on the screen. For save execution close all applications, especially NI software. Also consider a reboot.

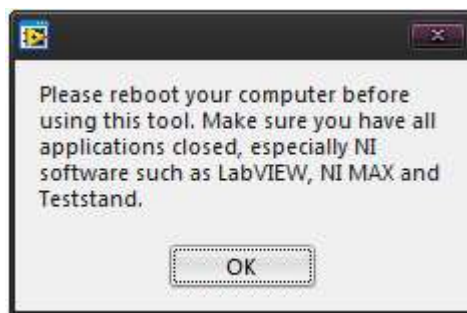


Figure 2: Reboot prompt

2.2 Network Settings

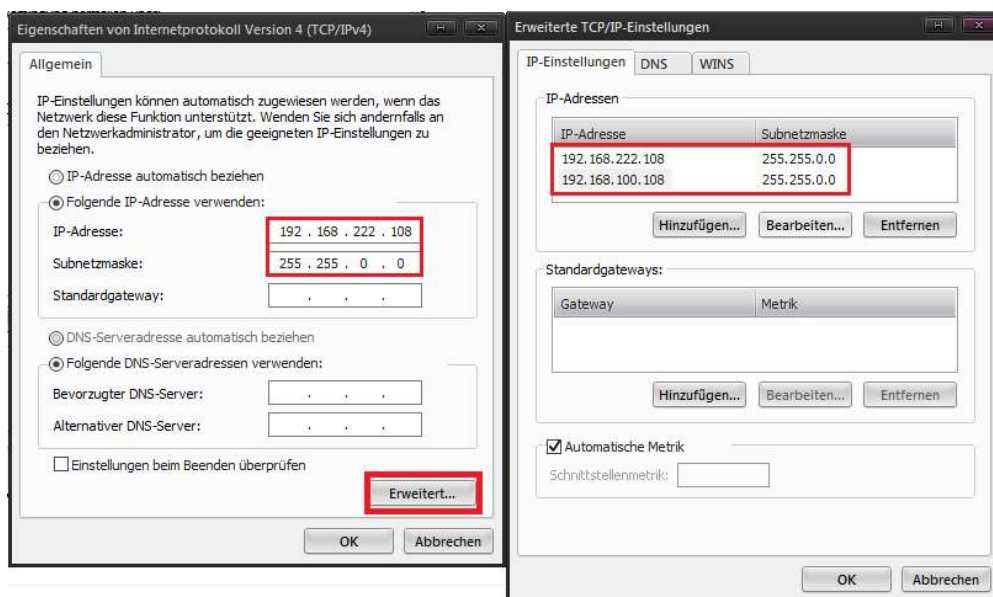


Figure 3: Network Settings

Mind, when switching to a new LabVIEW version the device will have default IP 192.168.222.1 temporarily. Therefor add the default MesSy network (192.168.222.XXX) and the working network (e.g. 192.168.100.XXX) to your network adapter settings.

Note, default and current network settings might be identical. Note, the working network setting depends on your application.

2.3 Firewall Settings

VersionSwitchingTool requires some Server Ports **not being blocked** by a Firewall. These ports include: UDP 44515, UDP 44525 and TCP 44516.

3. Switching versions

3.1 Discover MesSy

Use the Search button on the front panel to open the 'scan dialog'.



Figure 4: Search Button

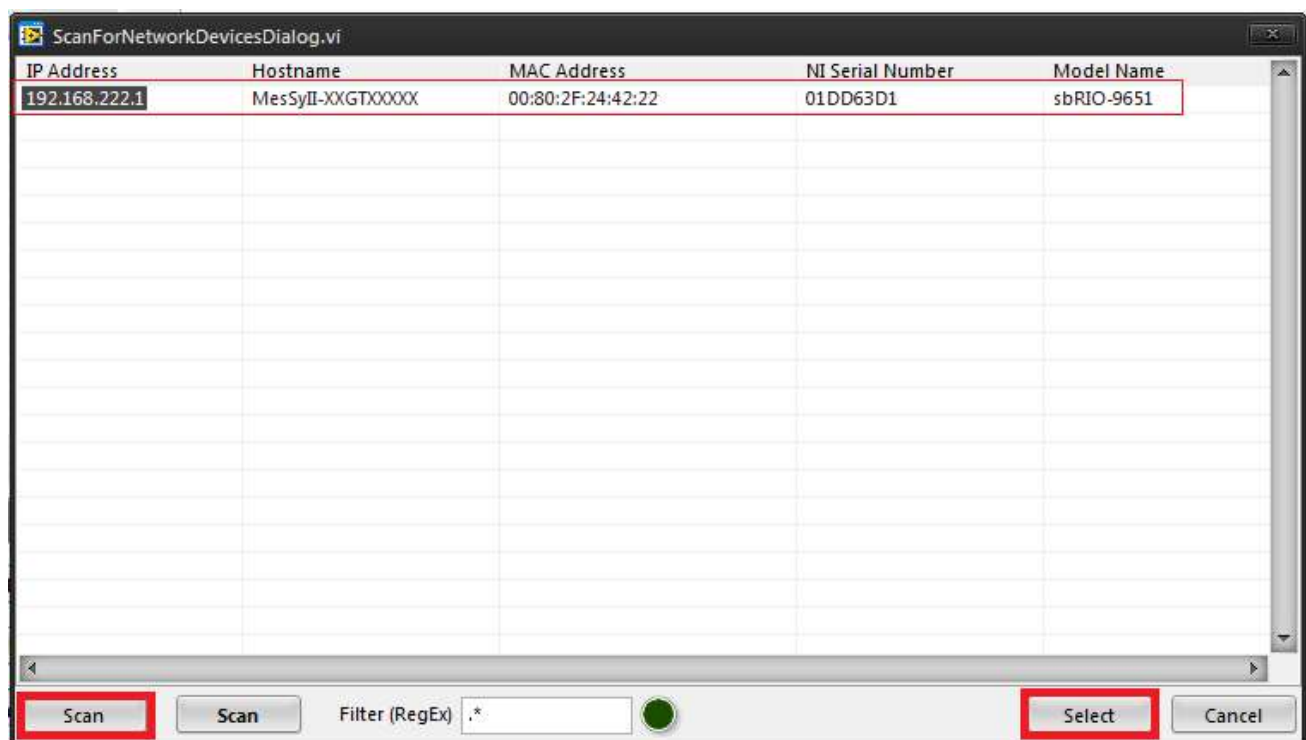


Figure 5: Scan Dialog

Once the ‘Scan Dialog’ is present, press ‘Scan’ to discover NI network devices. Select the MesSy II device you want to work with and click ‘Select’.

In case any devices can be found, check your network settings (See designated chapter), and check your physical network connection.

After selecting the MesSy, it’s device information will be displayed. A green light indicates that the device is available and can be connected. In case the ‘Device available?’ LED is off, the selected MesSy is not available for connection. Please review your network settings and check physical connection then.



Figure 6: Device Selection

3.2 Getting current LabVIEW version

Before switching MesSy’s software stack to another LabVIEW version, consider getting it’s current LabVIEW version. Therefor click ‘Get LabVIEW version. After a while the current version is displayed. If nothing is displayed, MesSy might be in formatted state. In this case restart the switching process.

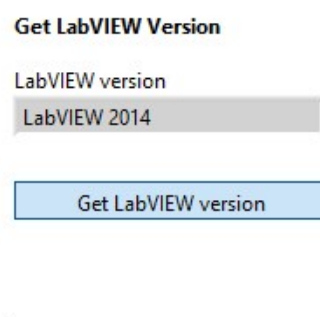


Figure 7: Get Version

3.3 Switching LabVIEW version

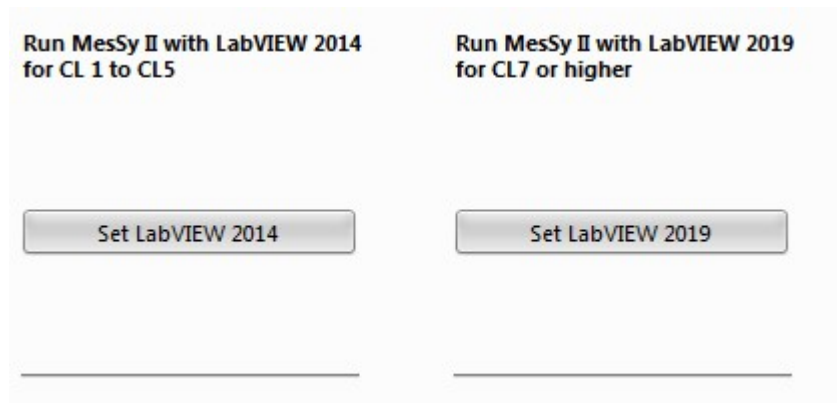


Figure 8: Start version switching

For switching to another LabVIEW version just press the designated button (see. Figure 8). After that the switching process will automatically set up MesSy for the selected LabVIEW version. Any progress in the switching process will be displayed in the Log box. A progress bar will indicate an active working process with MesSy.



Figure 9: Log Box

In case you get an unexpected error, you can export the log box content to a text file using the 'Export Log' button. Please provide the exported log to IRS in case you need further assistance.

After about 10 minutes the switching process should be done. The execution result will be indicated with LEDs (see Figure 10). Please feel free to retry in case the update process is not successful. Please consider rebooting your PC in case of unexpected behaviour, since the underlying NI software components are quite vulnerable.



Figure 10: Execution result

3.4 Exit VersionSwitchingTool

You either exit the program with the panel close button in the top right corner, or you can click the 'Stop' button on the front panel.

4. Additional functionality

4.1 Changing IP address

In rare cases the original device IP might get lost during switching process. In this scenario you can reset the IP address, so the IP has the value needed in your LTT environment. Therefor go to 'network' tab page, enter the desired IP address, and click the 'Set' button. Wait for the update process to finish.



Figure 11: Setting IP address

4.2 Rebooting MesSy

,VersionSwitchingTool' also offers a simple way to software-reboot your device. Simple go to the network tab page and click on the 'Reboot' button.



Figure 12: Rebooting MesSy